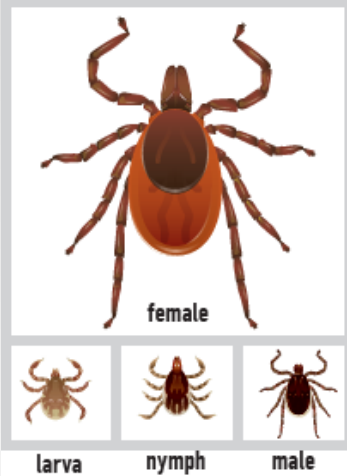


Tick-Borne Diseases and Non-pathogenic Impacts

(as determined by current research 5/2018)



Blacklegged tick



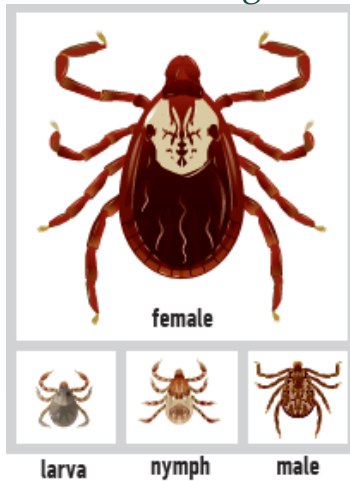
- Lyme disease
- Anaplasmosis
- Babesiosis
- Powassan virus *
- *Borrelia miyamotoi* *

Lone star tick



- Ehrlichiosis
- Southern Tick Associated Rash Illness (STARI) **
- Tick Bite-Induced Allergy (alpha-gal allergy) ***
- Canine ehrlichiosis

American dog tick



- Tularemia
- Rocky Mountain Spotted Fever ****
- Tick paralysis *****

* Has the potential to be transmitted by the larval stage

** As per the CDC, the cause of STARI remains unknown

*** Non-pathogenic

**** Lone stars may carry a less virulent form of rocky mountain spotted fever

***** Non-pathogenic, mostly associated with adult female American dog ticks