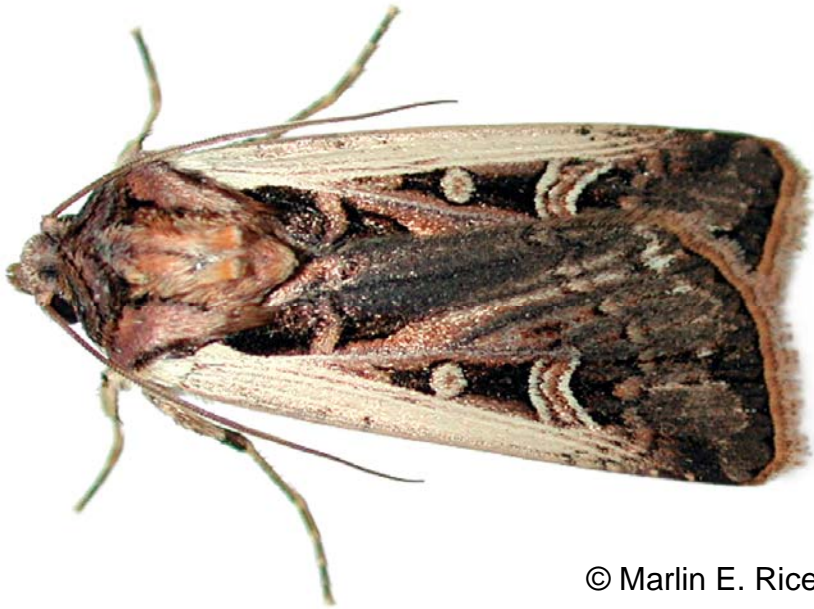


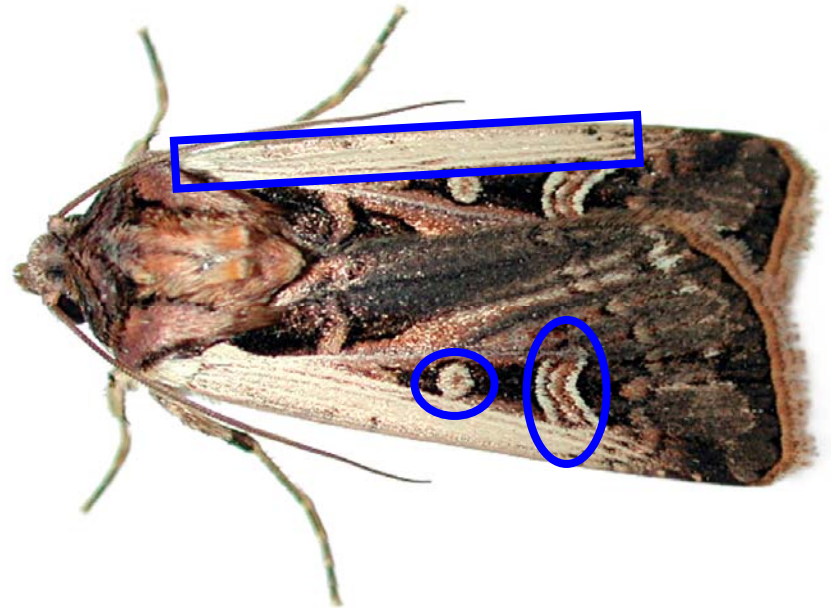


# western bean cutworm

- White wing bar on front or leading edge
- Small spots shaped like “full moon” and “boomerang”



© Marlin E. Rice



© Marlin E. Rice



# Western bean cutworm adult

## Look A Likes



Dingy Cutworm



Corn Earworm



Yellow striped armyworm



Western Bean Cutworm



European corn borer ♀



Fall Armyworm

# corn earworm



No distinct markings  
No white band

# European corn borer

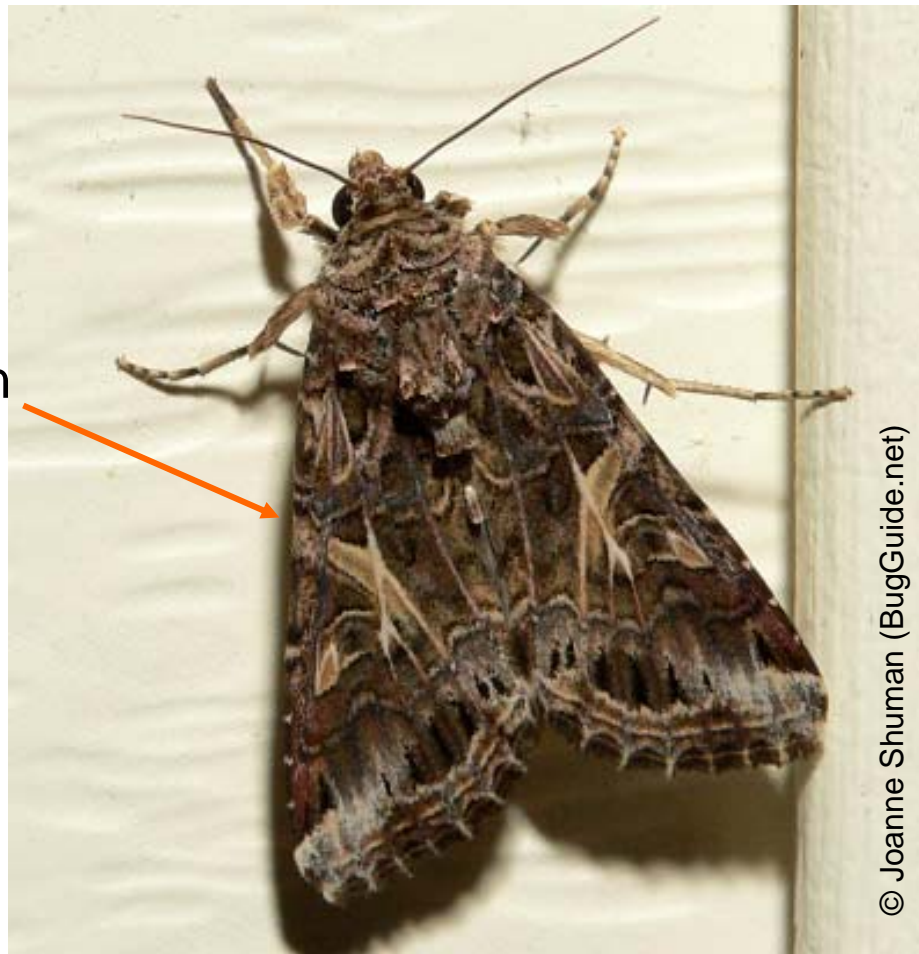


Markings are similar to what you'd see on a heartrate monitor

# yellow-striped armyworm

No white bands  
along wing margin

No “full moon” or  
“boomerang”



© Joanne Shuman (BugGuide.net)

# fall armyworm

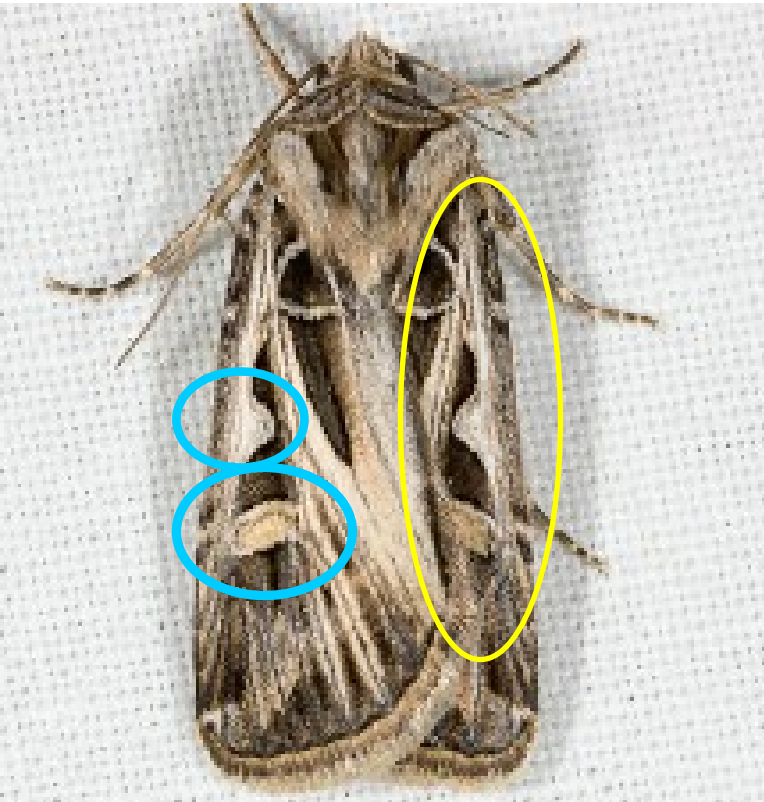
No white bands  
along wing margin



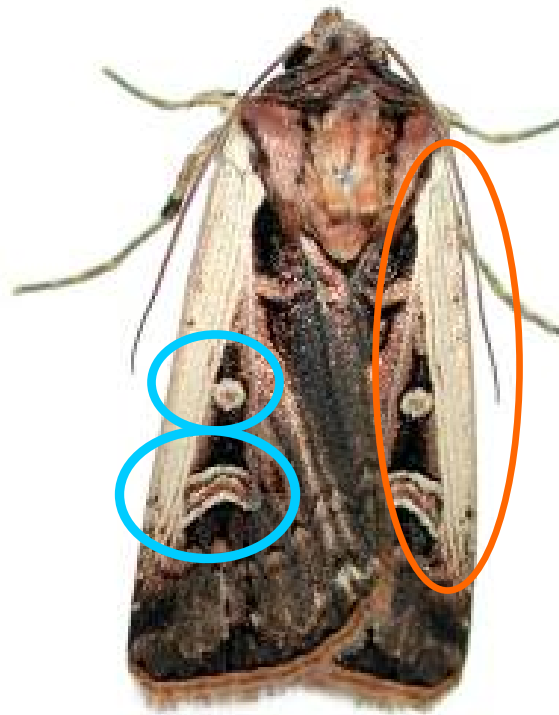
© Charles Schurch Lewallen (BugGuide.net)



## Dingy Cutworm



## Western Bean Cutworm

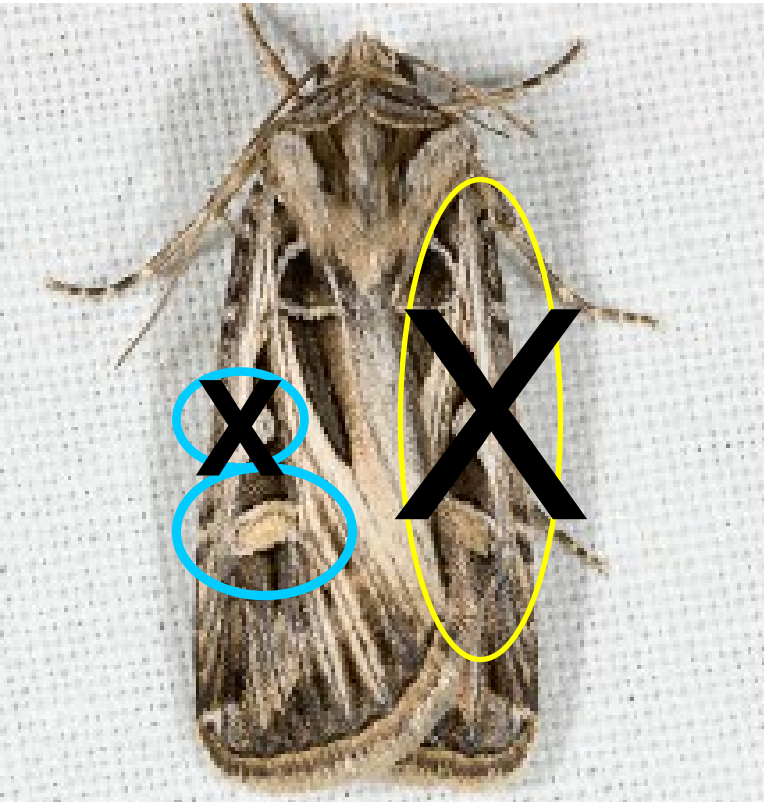


Look for the:

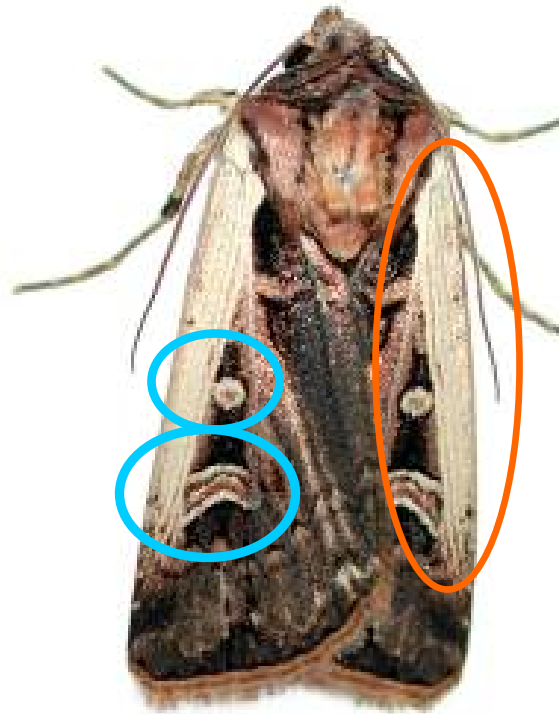
- moon,
- boomerang
- AND**
- Solid white band



## Dingy Cutworm



## Western Bean Cutworm



Look for the:

- moon,
- boomerang
- AND**
- Solid white band

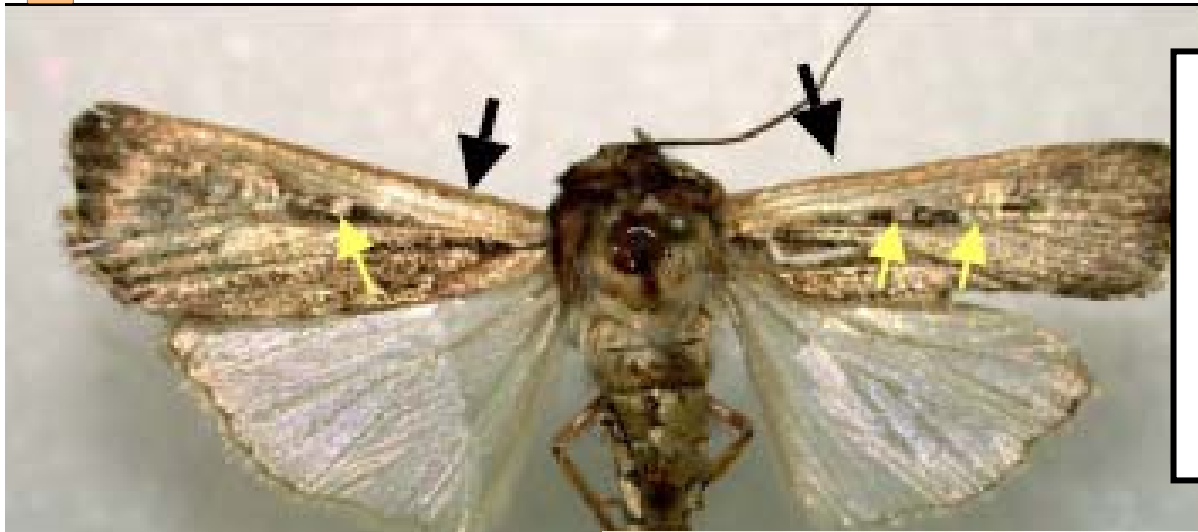


# Large Yellow Underwing

- aka Winter Cutworm
- Lots of these are being caught this spring (2011)



**Note the orange yellow underwing that distinguishes this from WBC**



Note how easily the moths lose their markings while floating in the liquid. However, you can still make out the white bands and full moons and boomerangs



**Western Bean Cutworm Moths  
from Traps**